

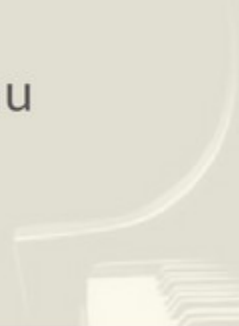
FREE BOOKLET +
WORKSHEETS

Learn to Read Music in 10 minutes

REMIFA MUSIC EDUCATION

Dan C Alonso
Piano Teacher and Author


www.remifamusic.com.au



LEARN TO READ MUSIC IN 10 MINUTES

By Dan Alonso – Piano Teacher and Author

This booklet is free of charge and can be shared/printed as many times as you like. It is a sample of the notes my students receive in their piano and theory lessons.

Licensed under Creative commons 4.0 international licence. 

LEARN TO READ THE MUSICAL NOTES BOOKLET 1 ver. Aug/2017

Learning to read music is not as hard as many people may think. If it is explained correctly and a little effort is made, you can be reading fluently in no time. Be consistent and patient, you will be surprised how quickly you can be reading music.

This booklet is for those with no musical experience wanting to learn how to read the TREBLE CLEF notes. The Treble Clef is the most commonly used Clef for instruments such as the piano, guitar and violin. Learn to read the treble clef and you can apply the rules to any clef for other instruments

The piano keyboard will be used in this booklet to better explain the theory. The piano is one of the best and easiest instruments to start learning music. It compliments musical theory very well and you will find it easier to learn theory with the piano than with any other instrument

If you found this book useful:

- Share it with friends and family.
- Like my Facebook page – REMIFA Music Education (www.facebook.com/remifamusic/)
- Book a free Piano lesson TRIAL with me. Email: remifamusic@gmail.com
Lessons in SYDNEY and ONLINE via SKYPE.

CONTENTS

Page	Contents
1.....	Introduction and Contents
2.....	The Staff and Ledger Lines
3.....	The Musical Alphabet and Notes
4.....	The Treble Clef
5.....	Mnemonic for Treble Clef
6.....	Worksheet
7.....	Worksheet
8.....	Worksheet Answers
9.....	Worksheet Answers
10.....	About Piano Lessons

READY FOR MORE? BOOK A FREE PIANO TRIAL TODAY!

Book a **FREE** 30 minute Piano Lesson Trial Lesson
SYDNEY CBD, INNER WEST and ONLINE via SKYPE.

Learn to read and play in no time. Ages 4+ and Adults very welcome.

Lessons are tailored and include all sheet music and notes.

Contact: remifamusic@gmail.com | 0478 506 641 | www.remifamusic.com.au

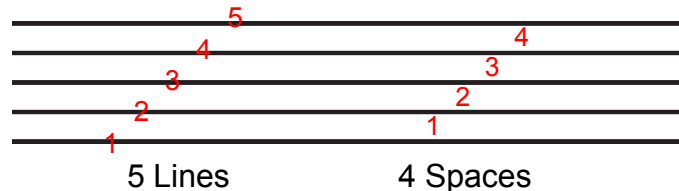
LEARN TO READ MUSIC IN 10 MINUTES

By Dan Alonso – Piano Teacher and Author 

THE STAFF

All musical symbols and notes are written or 'drawn' on the Staff (aka Stave).

The Staff is a set of FIVE lines and FOUR spaces. They are numbered from the bottom to the top.



In the Case of the Piano the lines and spaces will represent the WHITE keys.

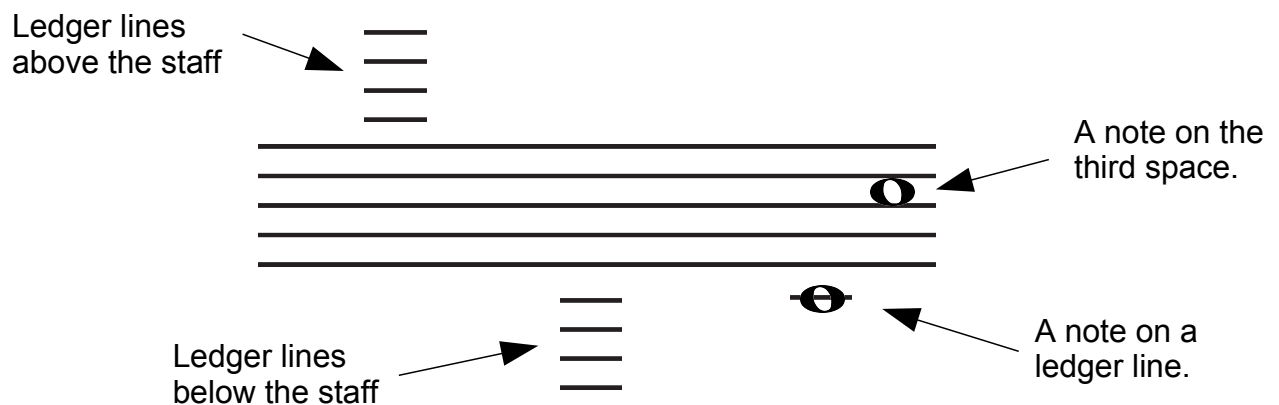
The Staff only allows for NINE notes. Most instruments have more than this number of notes and ledger lines are used to accommodate more notes.

LEDGER (aka LEGER) LINES


The Staff alone cannot accommodate all the musical notes played on various instruments, such as the piano. Therefore, more lines and spaces are needed. However, adding more can result in confusion and difficulty when reading.

The ledger lines allow more notes to be written without making it hard to identify the numbers of the lines and spaces.

The ledger lines are smaller lines that can be placed above and below the Staff. They allow for more notes to be represented and extend beyond the range of the Staff.



LEARN TO READ MUSIC IN 10 MINUTES

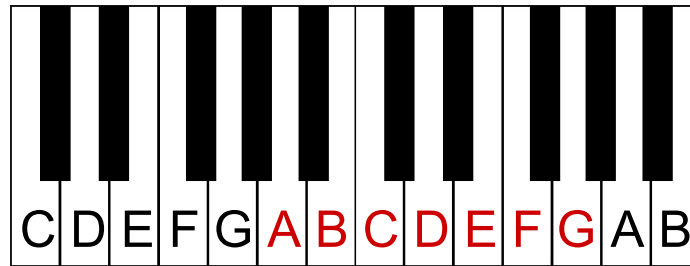
By Dan Alonso – Piano Teacher and Author 

THE MUSICAL ALPHABET

In western music there are SEVEN notes. **A B C D E F G**. The notes repeat to extend across all the notes of the instrument. After G the alphabet starts again on A.

These notes are the WHITE keys of the piano. Notice the pattern formed the BLACK keys and use this to help you find the notes. Eg. The white key to the right of a set of two black keys is C and the white key to the right of a set of three black keys is F.

C and F can be used as reference points to quickly work out the rest of the notes.

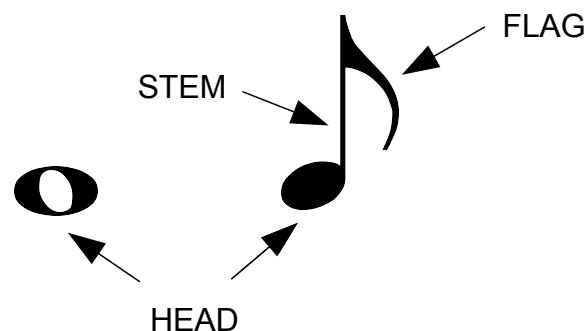


The note to the right of every set of two black keys is C

The note to the right of every set of three black keys is F

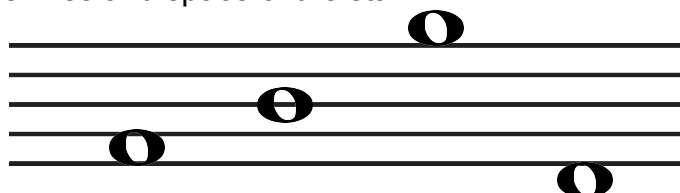
THE MUSICAL NOTES

The NOTES are the symbols that represent the key to play and duration of that sound. They are composed of three parts: the head, the stem and the flag.



The note HEAD is the part of the note that will give the name of the note. Where it is placed on the staff indicates which note to play. The rest of the note and the way it looks will indicate the time value.

The notes are placed on the lines and space of the staff.



LEARN TO READ MUSIC IN 10 MINUTES

By Dan Alonso – Piano Teacher and Author

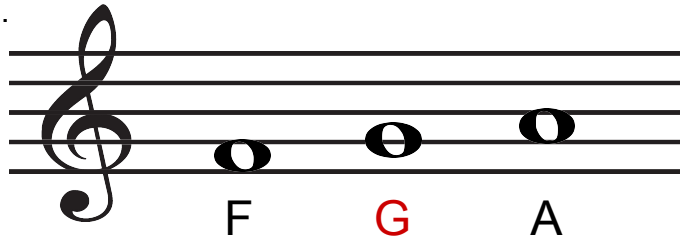
THE TREBLE CLEF



The CLEFS are musical symbols that are placed at the beginning of the Staff and assign names to the lines and spaces. Without a Clef the lines and spaces have NO names.

There are various Clefs used in music and each one assigns different names to the lines and spaces. If you can read Treble clef, you can read any other Clef.

The TREBLE CLEF is the most commonly used clef in music. It is used for instruments such as the piano, guitar and violin.

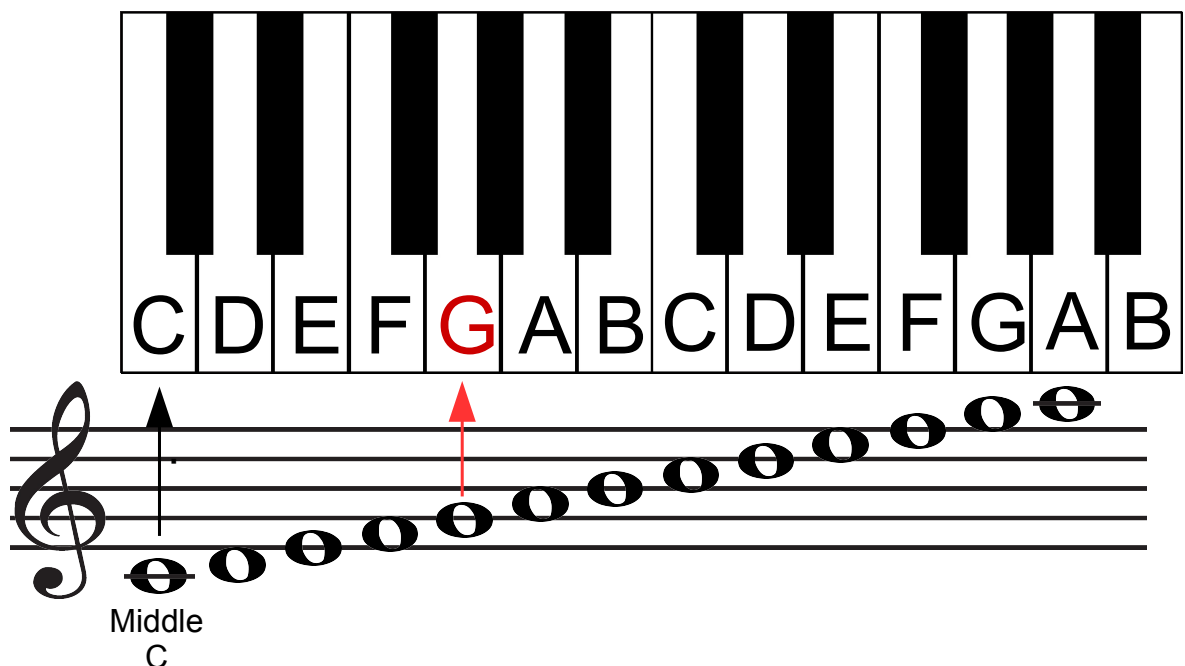


The Treble Clef is also known as G-Clef and the SECOND line is given the name G. Therefore, any note placed on this line when there is a treble clef is G. The note on the space below is F and the note on the space above is A.

Counting up and down using the musical alphabet it is possible to work out all the names of the lines and spaces for the Treble Clef.


Remember: the SECOND LINE in Treble Clef is always G.

THE NOTES ON THE STAFF TO THEIR KEY ON THE PIANO



Middle C is a great reference point. To find Middle C on the piano simply find the set of two black keys in the middle of the piano, it is the white key to the left. Now you can use G (on the second line) and Middle C as quick references for working out the other notes.

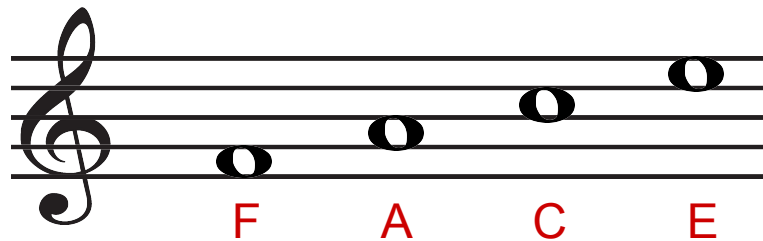
LEARN TO READ MUSIC IN 10 MINUTES

By Dan Alonso – Piano Teacher and Author 

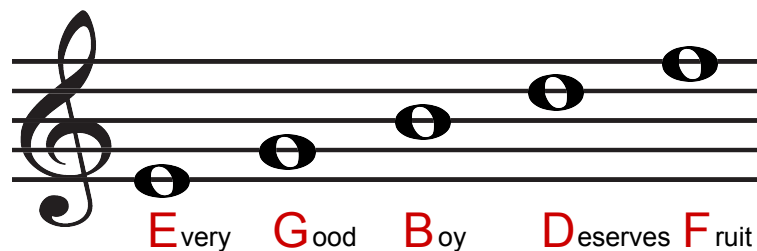
MNEMONIC FOR THE TREBLE CLEF NOTES

An easy way to remember the names of the notes is with the use of mnemonics. However, it is best to try and make the effort to learn the names than to always rely on this help.

SPACES

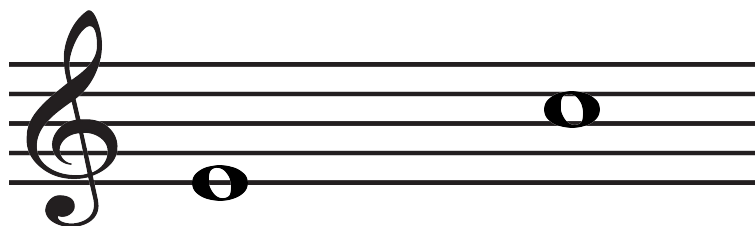


LINES

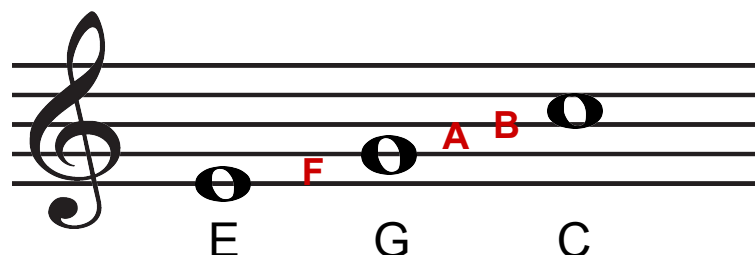


HOW TO NAME ANY NOTE IN THE TREBLE CLEF


Name these notes



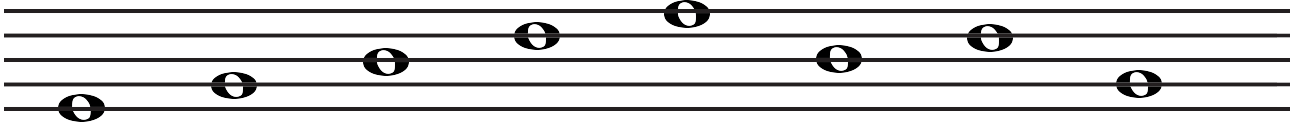
1. Remember that second line in Treble clef is G.
2. Use the musical alphabet and count up or down from G until the note you want to name.



WORKSHEET

By Dan Alonso – Piano Teacher and Author 

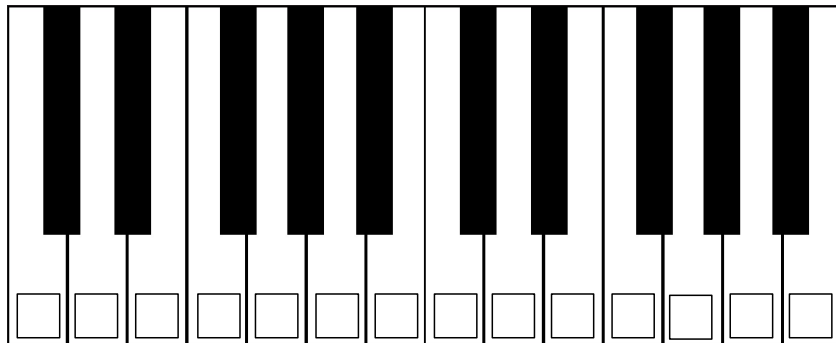
1. Under each note write the number of the line that it is on:



2. Under each note write the number of the space that it is on:



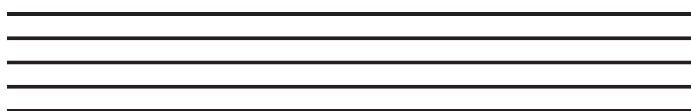
3. In each box write the name for each white key:




4. Join the lines to form the Staff:



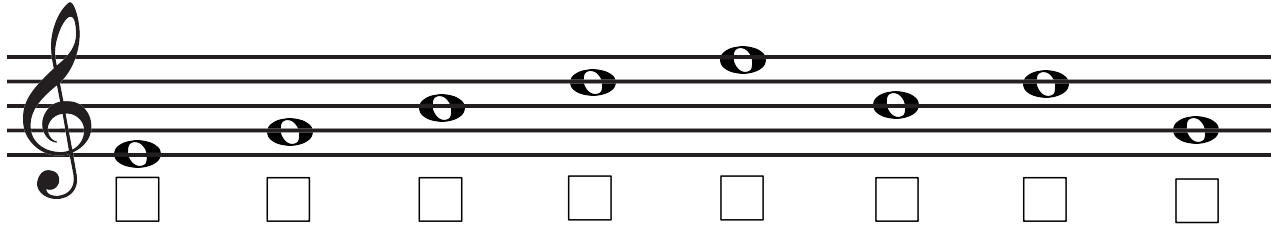
5. Draw two ledger lines above and below the lines of the Staff:



WORKSHEET

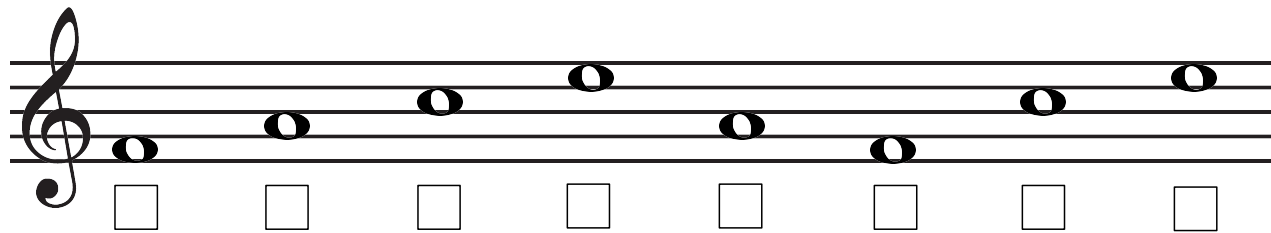
By Dan Alonso – Piano Teacher and Author 

6. Name the notes on the lines:



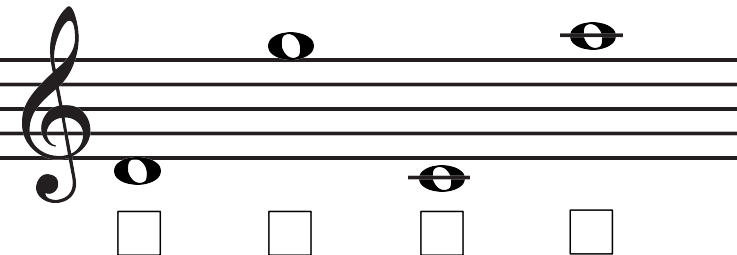
A musical staff with a treble clef. Eight whole notes are placed on the lines of the staff. From left to right, the notes are on the first, second, third, fourth, fifth, first, second, and third lines. Below each note is a small empty square box for labeling.

7. Name the notes in the spaces:



A musical staff with a treble clef. Eight whole notes are placed in the spaces between the lines of the staff. From left to right, the notes are in the first, second, third, fourth, fifth, first, second, and third spaces. Below each note is a small empty square box for labeling.

8. Name the notes above and below the staff:




A musical staff with a treble clef. Four whole notes are placed outside the staff lines. Two are on the lines: one on the second line and one on the fifth line. Two are in the spaces: one in the space below the first line and one in the space above the fifth line. Below each note is a small empty square box for labeling.

9. What is the name of the second line in the Treble Clef?

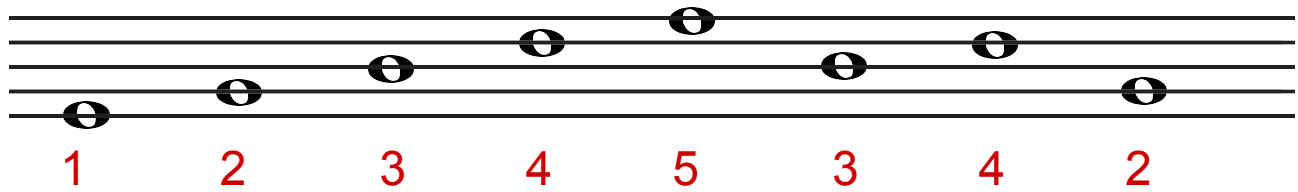
10. How many lines and spaces form the the musical Staff?

11. The lines and spaces are numbered from _____ to _____ .

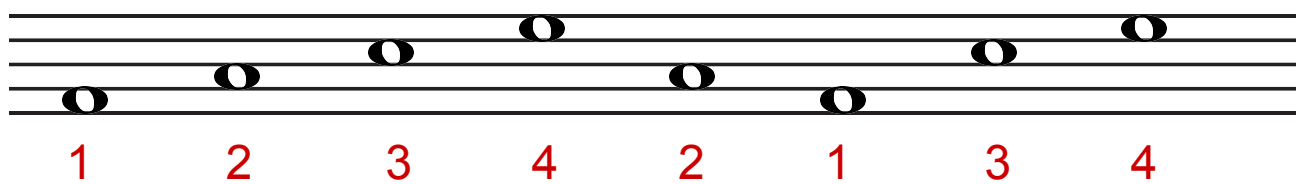
WORKSHEET: Answer Sheet

By Dan Alonso – Piano Teacher and Author 

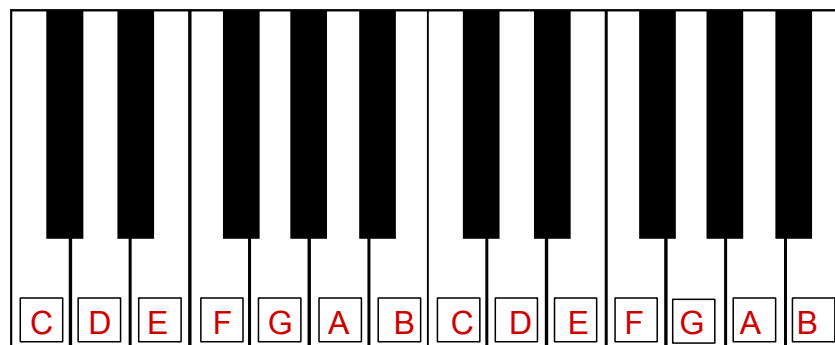
1. Under each note write the number of the line that is it on:



2. Under each note write the number of the space that it is on:



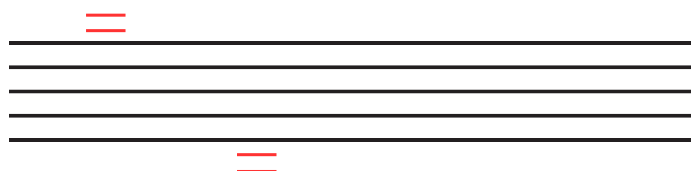
3. In each box write the name for each white key:




4. Join the lines to form the Staff:



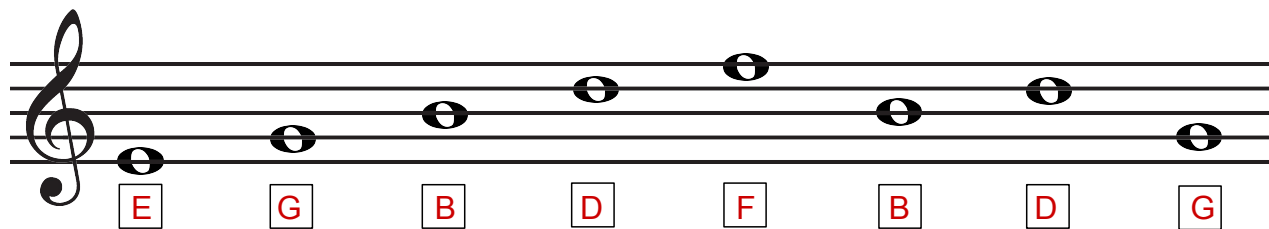
5. Draw two ledger lines above and below the lines of the Staff:



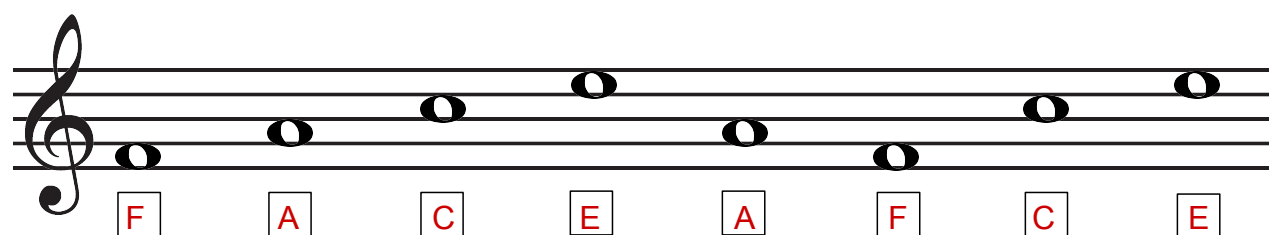
WORKSHEET: Answer Sheet

By Dan Alonso – Piano Teacher and Author 

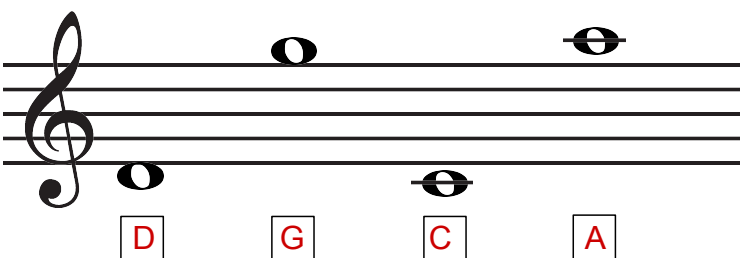
6. Name the notes on the lines:



7. Name the notes in the spaces:



8. Name the notes above and below the staff:



9. What is the name of the second line in the Treble Clef? **G**

10. How many lines and spaces form the musical Staff? **5 Lines and 4 Spaces**

11. The lines and spaces are numbered from **Bottom** to the **Top**.

BOOK A TRIAL NOW!

By Dan Alonso – Piano Teacher and Author

BOOK A FREE 30 MINUTE PIANO LESSON TRIAL

Call: 0478 506 641 Email: remifamusic@gmail.com Skype: remifaskype

Lessons Locations: Sydney CDB Studio, Inner west Studio and Online via Skype

- Learn to play piano and read music faster and better. No experience needed.
- All sheet music, notes and worksheets are included.
- Tailored lessons based on personal goals and likes.
- Adult beginners accelerated courses.
- Lesson all year round.

In as little as 10 of my lessons you can read and play at AMEB grade 1 level.

This means you will be able to read and play with both hands without any help.

You will be able to understand all the musical symbols and necessary techniques to play the following Bach Minuet all on your own.

Sheet music supplied by: www.music-scores.com

Minuet in G minor

From "A Little Notebook for Anna Magdalena Bach"

- 5 -

Compiled by
Johann Sebastian BACH
(1685-1750)